

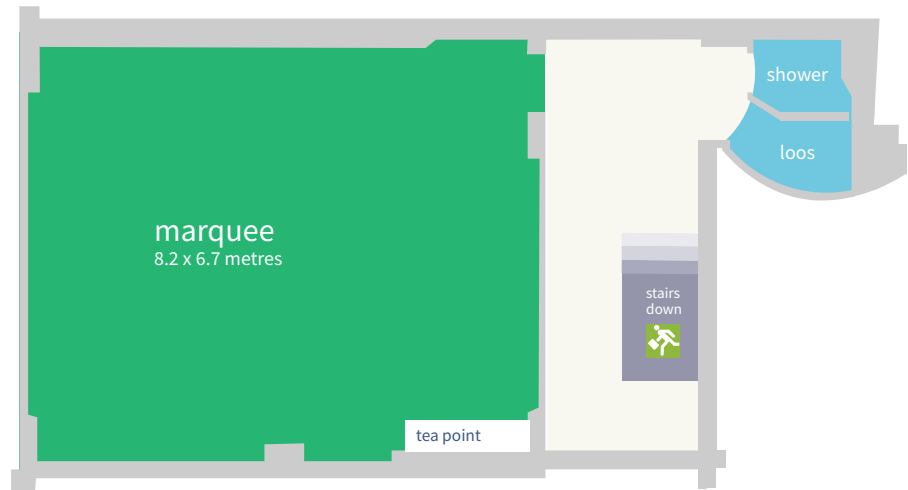
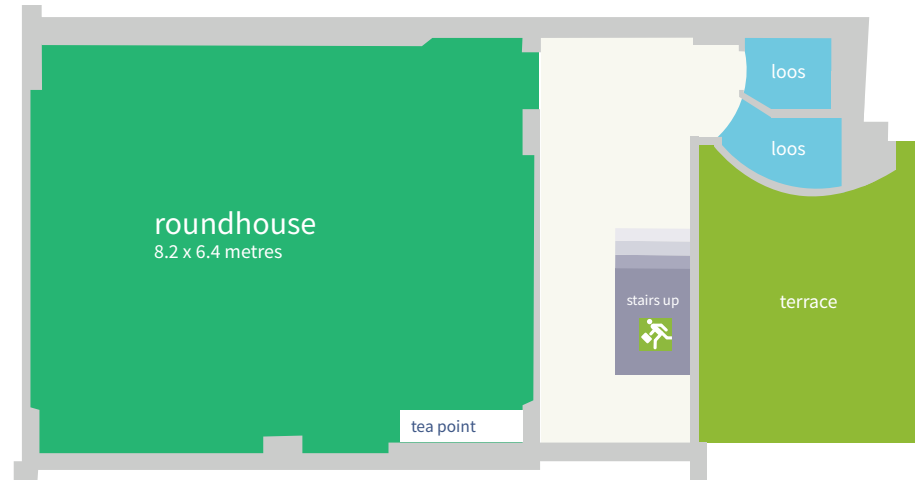
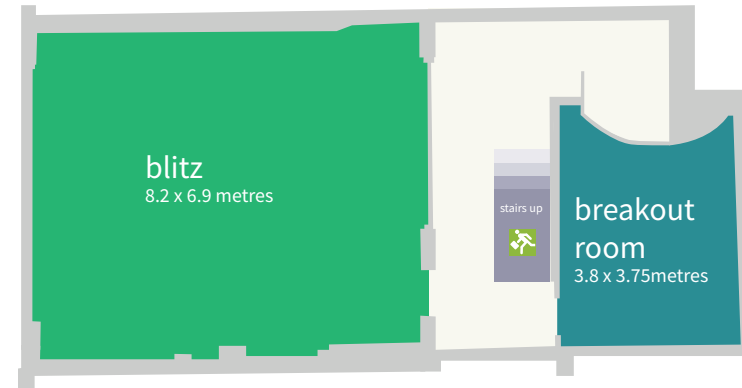


## wallacespace covent garden dimensions and capacities

	dimensions	max. theatre style	max. u-shape tables + chairs	max. boardroom	max. u-shape chairs	max. cabaret	max. soft seating	working space in square metres
60ps astoria	8.2 x 5.3 mtr	n/a	n/a	n/a	n/a	6	n/a	43.5
60ps scala	7.7 x 8.5 mtr	n/a	n/a	n/a	n/a	12	n/a	65.5
60ps blitz	8.2 x 6.9 mtr	n/a	n/a	n/a	n/a	n/a	12	56.5
60ps roundhouse	8.2 x 6.4 mtr	n/a	n/a	n/a	n/a	12	n/a	52.5
60ps marquee	8.2 x 6.7 mtr	n/a	n/a	n/a	n/a	12	n/a	54.5
60ps lower caffe		n/a	n/a	n/a	n/a	14	n/a	56
53ps 1956	10.2 x 4.3 mtr	15	11	11	12	9	12	44
53ps 1959	8.2 x 4.3 mtr	9	6	6	8	6	8	35
53ps 1965	7.5 x 4.4 mtr	10	8	8	8	6	8	33
53ps 1969	7.9 x 5.3 mtr	16	11	11	12	12	12	42
53ps 1972	4.7 x 5.8 mtr	9	6	6	7	6	7	27
53ps 1977	4.3 x 4.7 mtr	6	5	5	5	0	5	20
53ps 1979	8.5 x 4.5 mtr	11	9	9	9	9	9	38
53ps 1989	6.0 x 4.2 mtr	9	7	7	6	6	7	25
53ps 1989-90	8.6 x 6.0 mtr	12	9	10	10	12	9	51.5
53ps 1990	6.0 x 4.2 mtr	9	7	7	6	6	7	25
53ps 1990-1991	8.6 x 6.0 mtr	12	9	10	10	12	9	51.5
53ps 1991	6.0 x 4.2 mtr	9	7	7	6	6	7	25
53ps 1989-91	12.8 x 6.0 mtr	18	16	16	16	18	15	77
53ps 1994	7.6 x 3.8 mtr	10	8	6	8	9	7	29
53ps 2019	8 x 6.7 mtr	16	10	10	12	15	12	53.5



wallacespace **covent garden** 60 parker street all floors



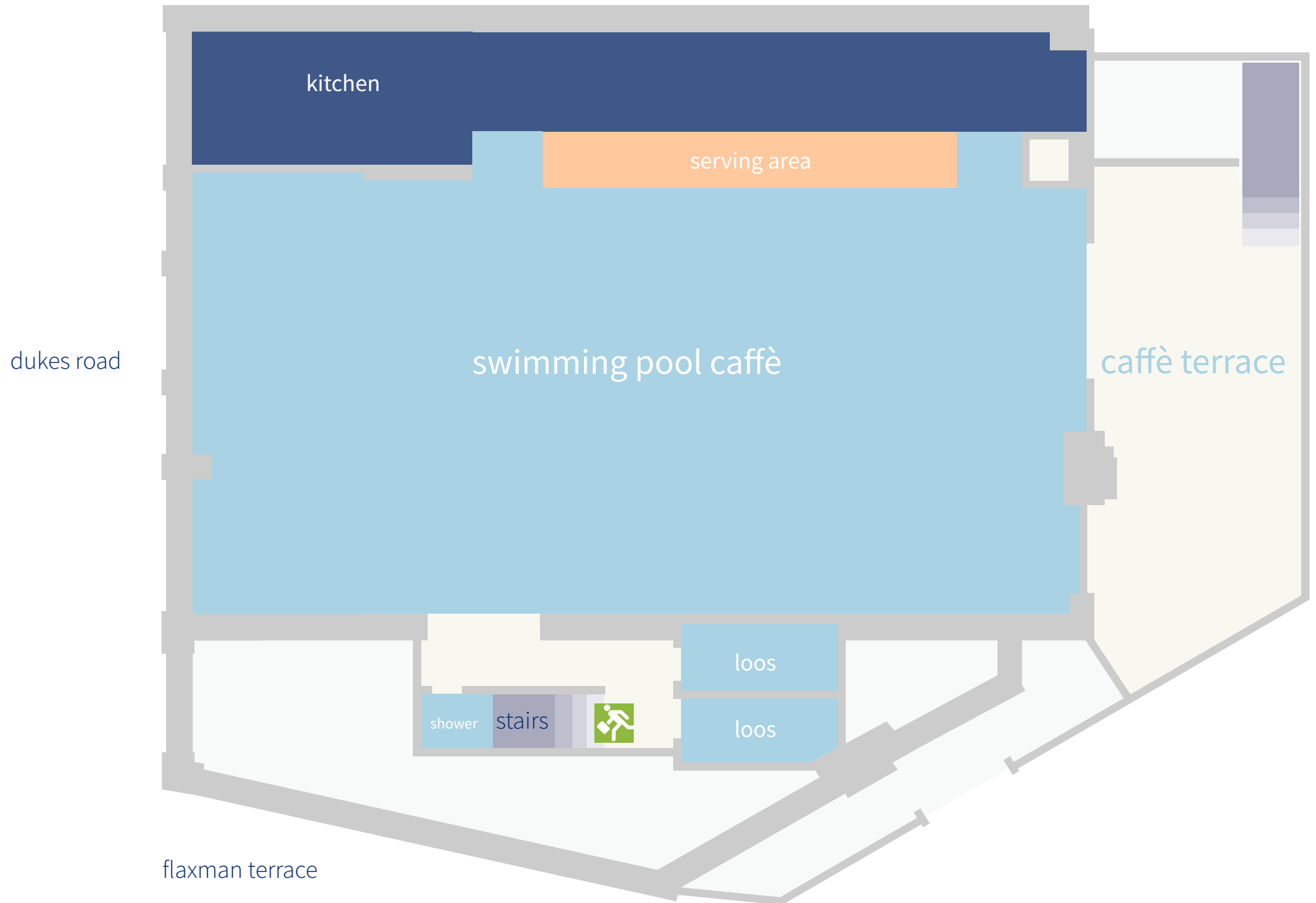


wallacespace covent garden 53 parker street 1st floor



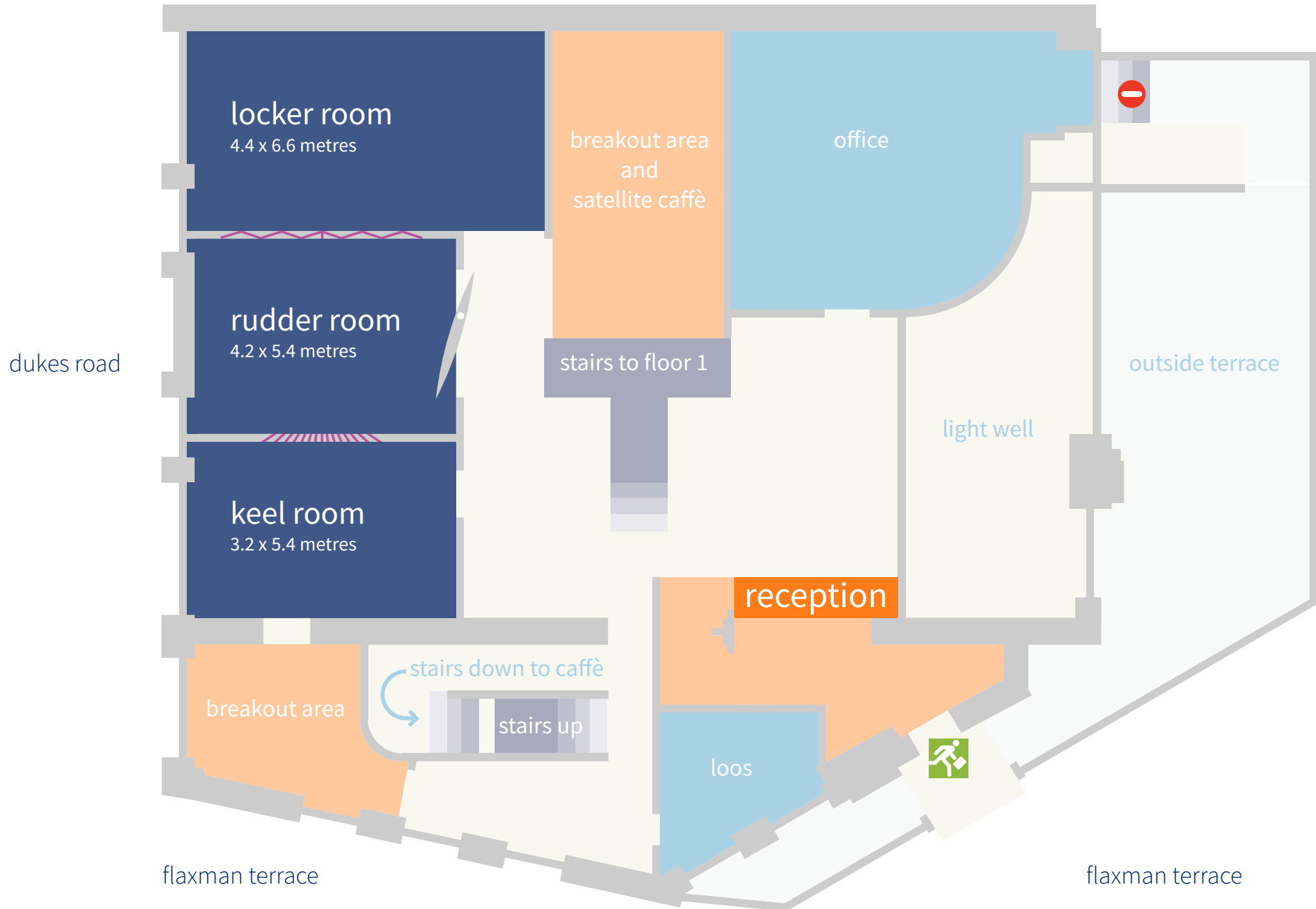








wallacespace **st pancras** ground floor













## wallacespace clerkenwell green dimensions and capacities

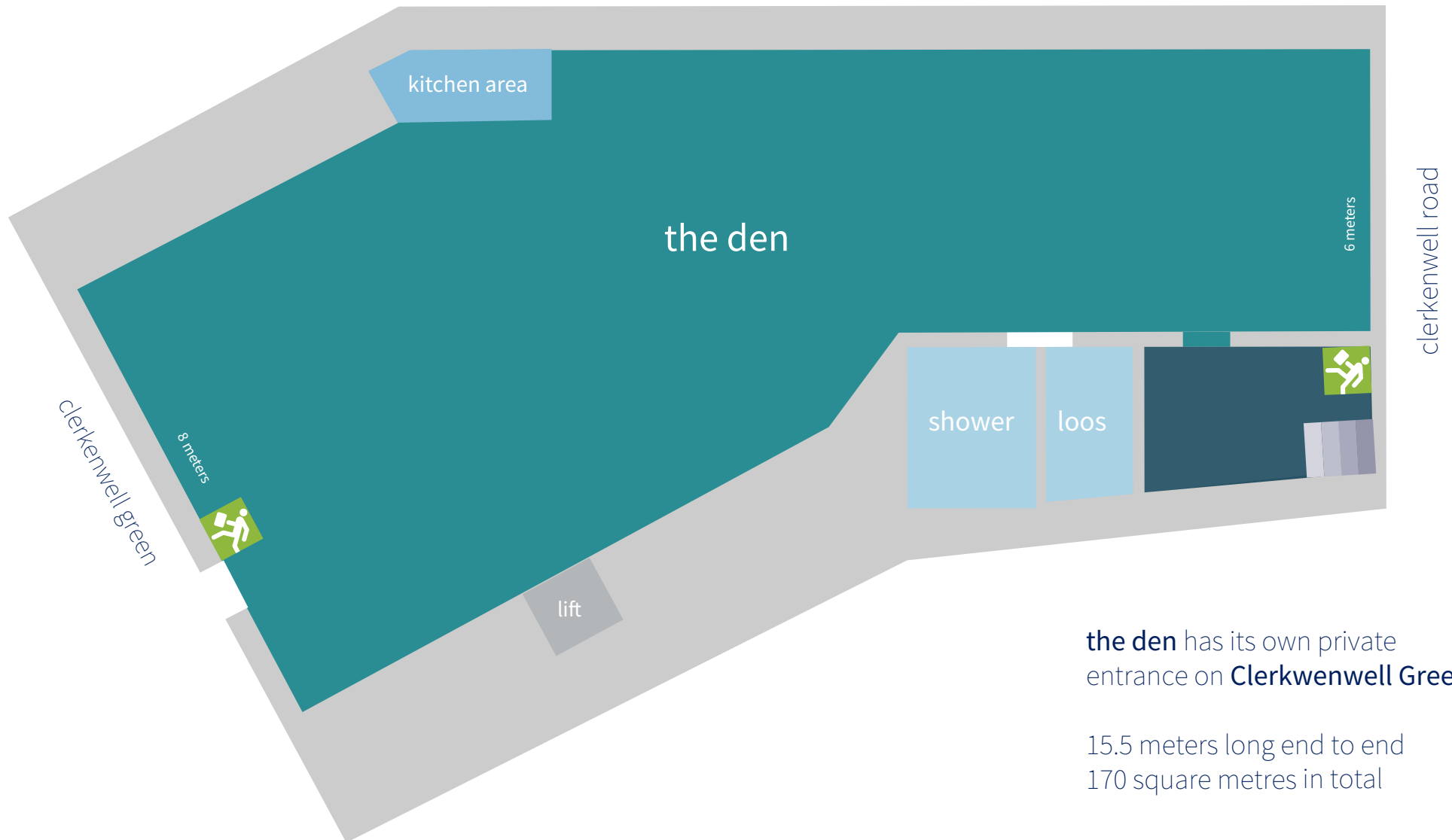
	dimensions	max. theatre style	max. u-shape tables + chairs	max. boardroom	max. u-shape chairs	max. cabaret	max. soft seating	working space in square metres
11 salt room	5.0 x 7.5 mtr	12	8	8	8	9	8	32
12 pepper room	5.0 x 7.5 mtr	10	8	6	8	9	8	32
salt + pepper	10 x 7.5 mtr	16	16	16	16	16	16	63.5
13 sugar room	4.4 x 2.5 mtr	2	2	2	3	0	3	14
14 ginger room	11 x 5.5 mtr	16	11	10	16	12	16	60.5
21 tea room	5.0 x 7.5mtr	12	8	8	8	9	8	32
22 coffee room	5.0 x 7.5 mtr	10	8	6	8	9	8	32
tea + coffee	10 x 7.5 mtr	16	16	16	16	16	16	63.5
13 copper room	4.4 x 2.5 mtr	4	3	3	4	3	4	17
14 tin room	5.4 x 3.3 mtr	10	8	6	8	9	8	34.5
31 silk room	5.1 x 7.5mtr	12	8	8	8	9	8	32
32 cotton room	5.1 x 7.5 mtr	10	8	6	8	9	8	32
silk + cotton	10.1 x 7.5 mtr	18	16	16	16	16	18	63.5
33 flax room	4.5 x 2.5 mtr	2	0	2	2	0	4	15
34 jute room	5.5 x 3.3 mtr	3	0	3	4	0	4	17
35 hemp room	5.5 x 3.3 mtr	3	0	3	3	0	4	17
penthouse a	10.0 x 7.0 mtr	n/a	n/a	n/a	n/a	16	n/a	65
penthouse b	12.5 x 4.0 mtr	15	10	10	15	12	15	48
the den	22 x 6 x 2.4 mtr	35	40	20	30	35	30	185

the kitchen

maximum numbers for dining 35  
maximum numbers for a stand up reception 170

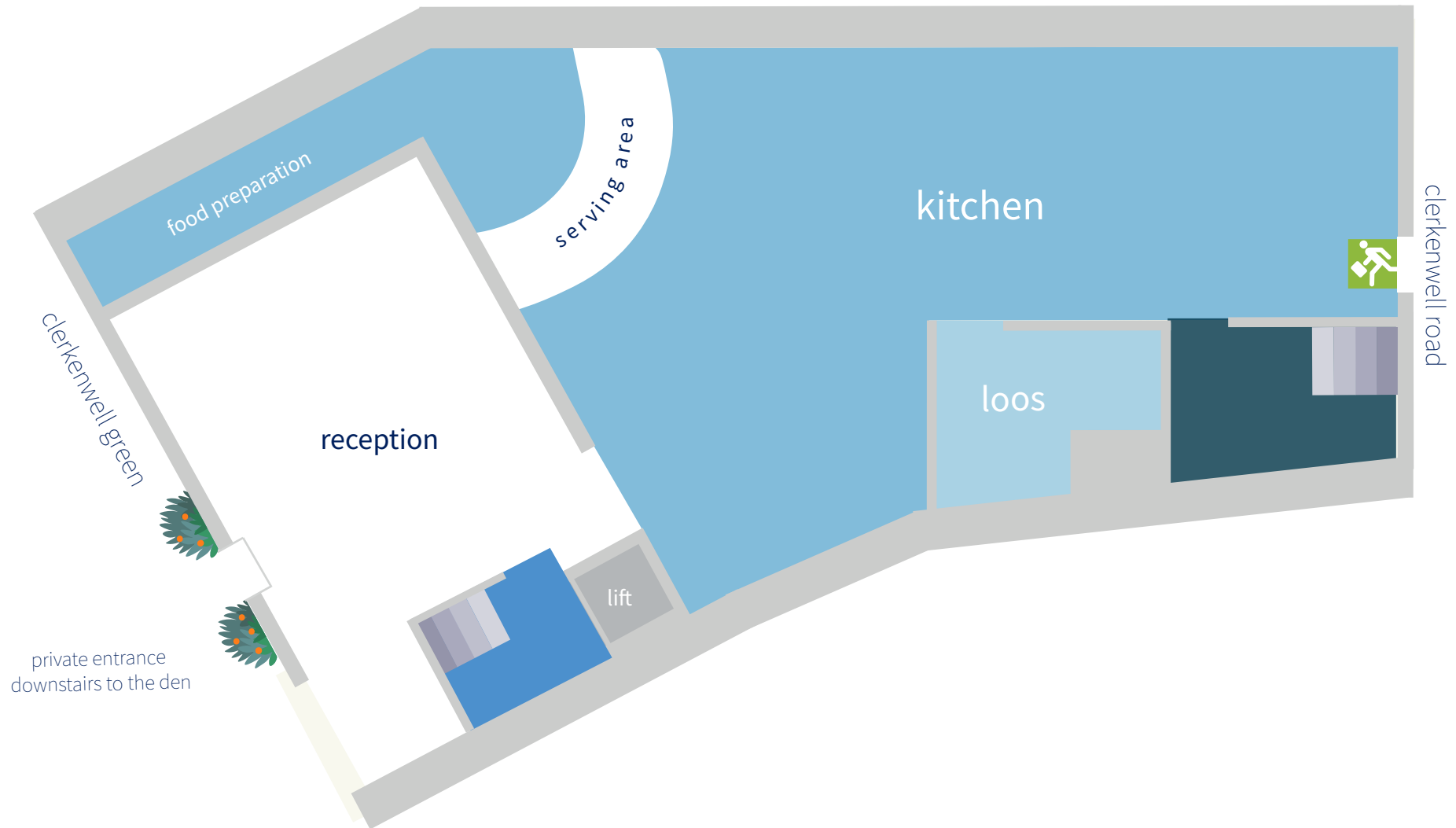


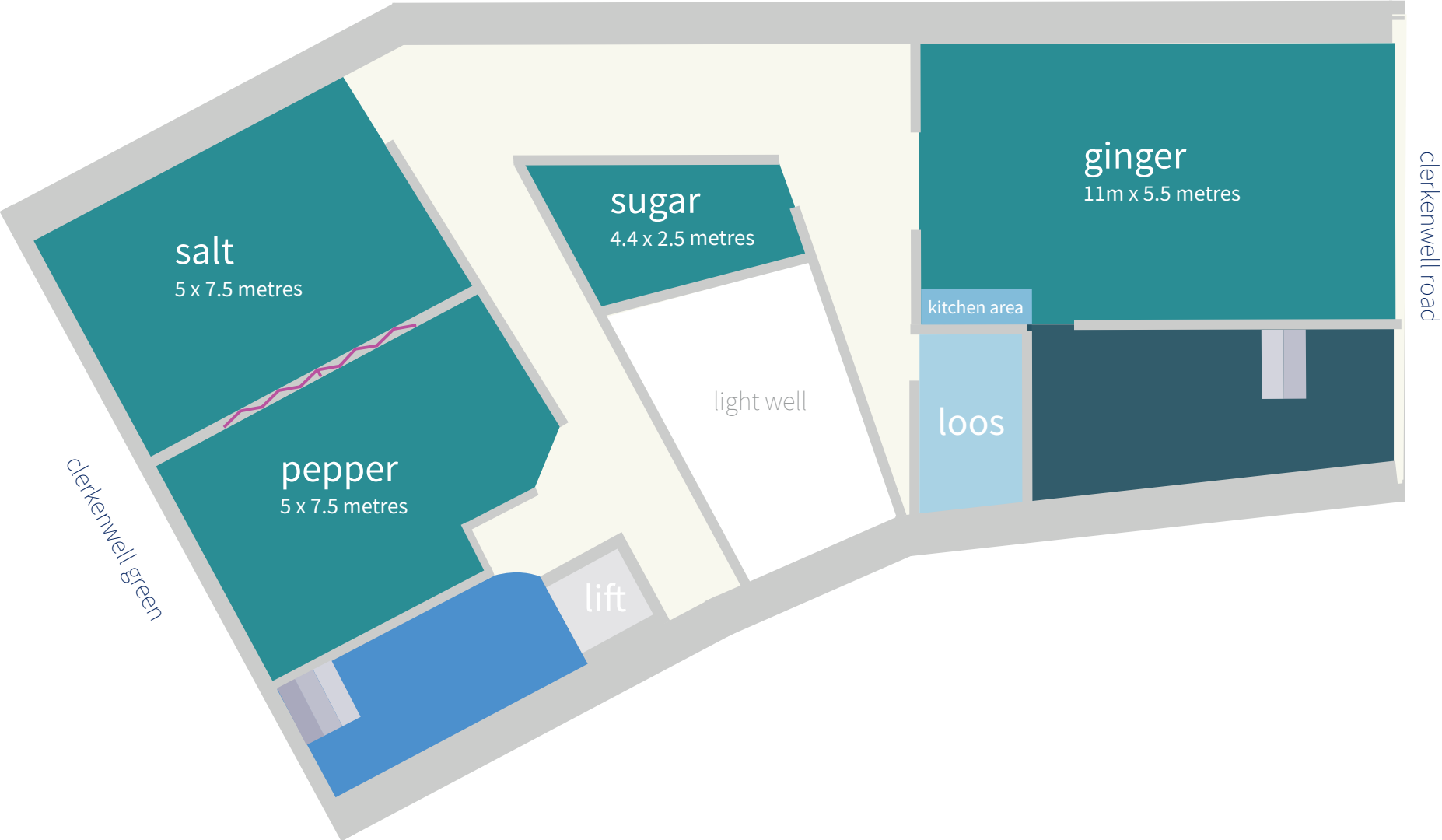
wallacespace **clerkenwell green** lower ground floor



**the den** has its own private entrance on **Clerkwenwell Green**.

15.5 meters long end to end  
170 square metres in total

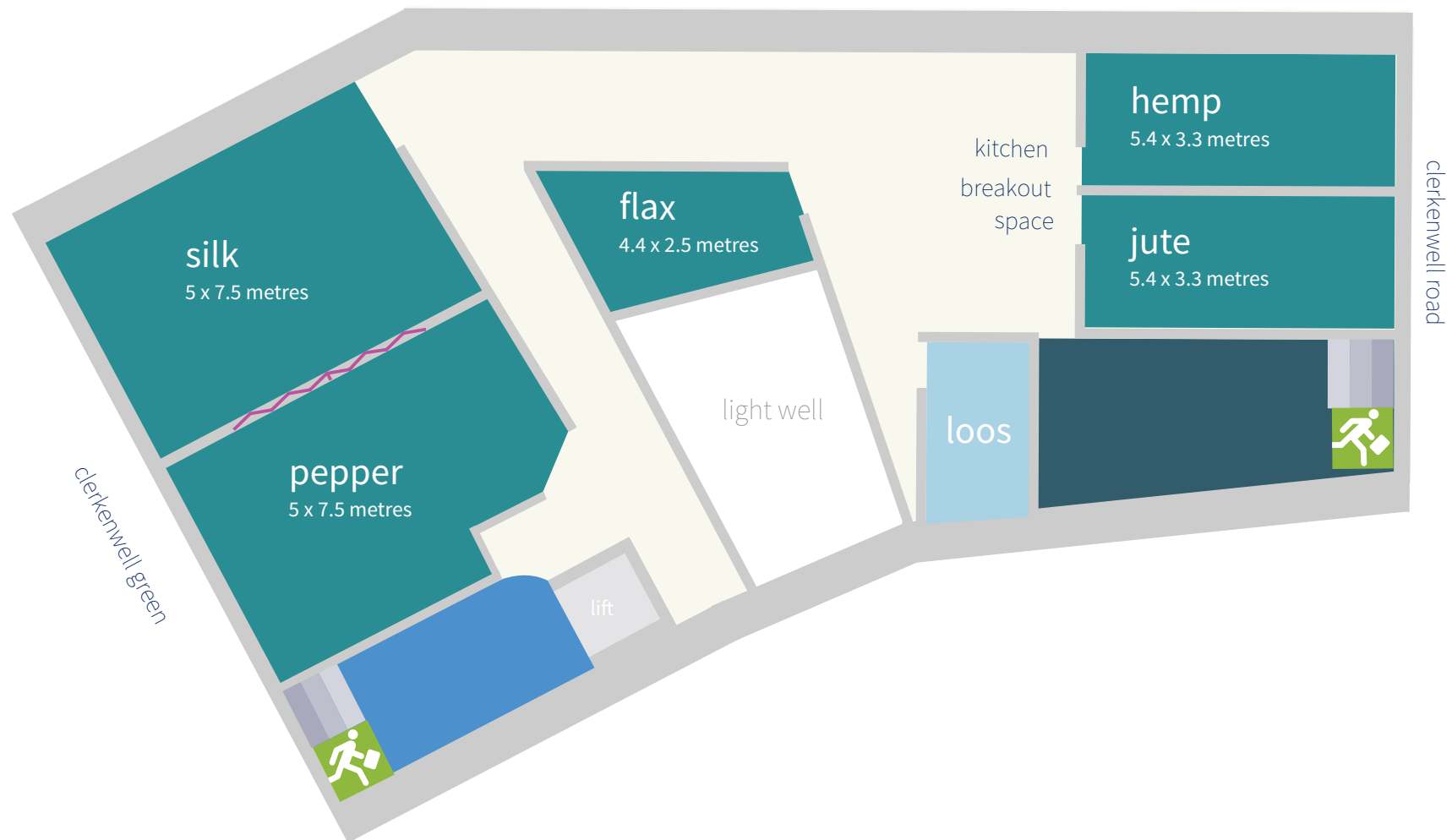






wallacespace **clerkenwell green** second floor

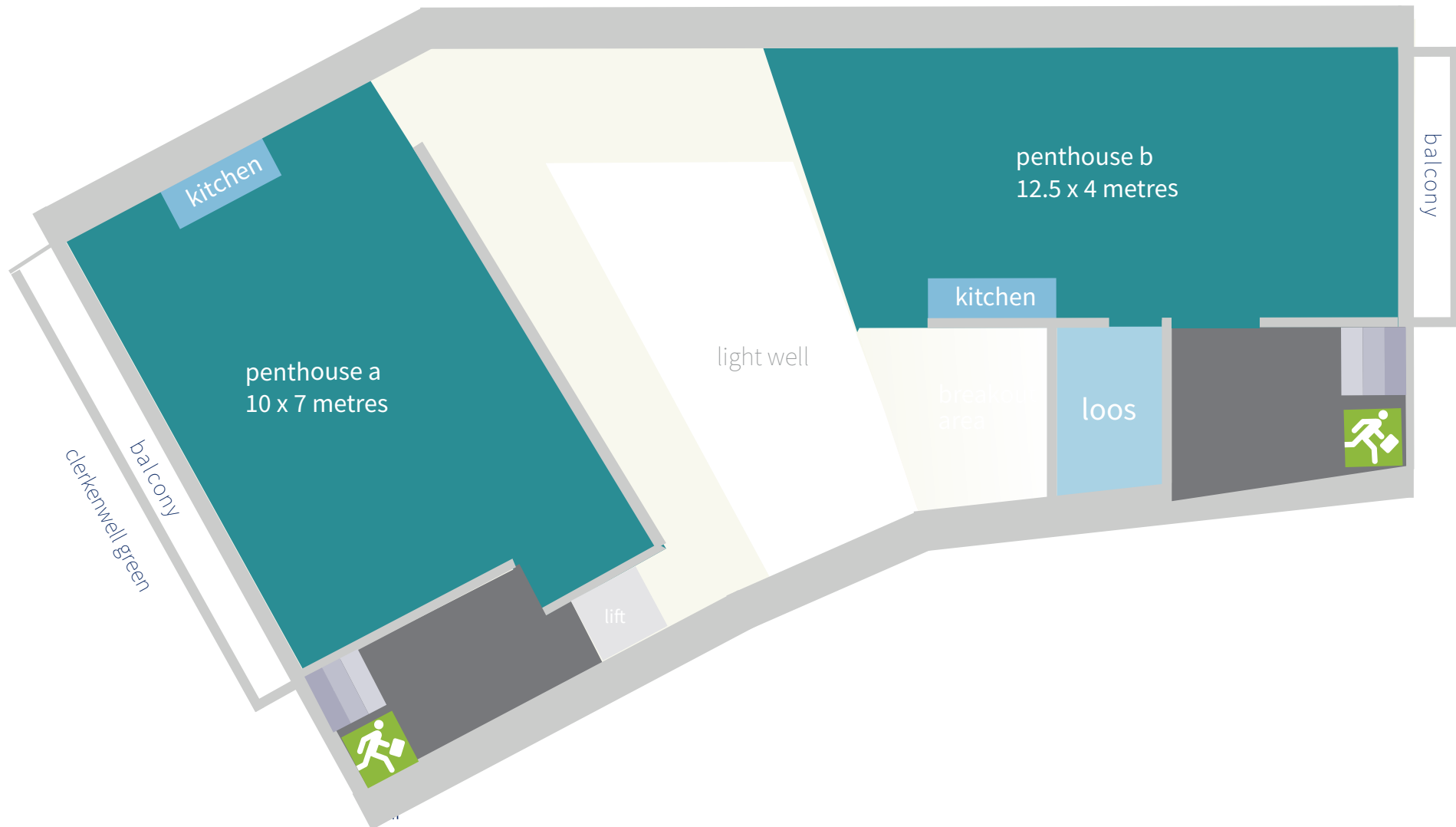








wallacespace **clerkenwell green** fourth floor





## wallacespace **spitalfields** dimensions + capacities

	dimensions	max. theatre style	max. u-shape tables + chairs	max. boardroom	max. u-shape chairs	max. cabaret	max. soft seating	working space in square metres
1.1 ariane	3.0 x 8.5 mtr	10	9	9	8	9	7	41.5
1.2 strelka	4.0 x 5.0 mtr	6	0	3	3	0	4	22.5
1.3 belka	4.0 x 5.0 mtr	3	0	3	3	0	4	22
1.4 luna	9.0 x 9.0 mtr	30	22	24	25	30	25	98.5
1.5 laika	4.0 x 8.0 mtr	10	8	9	8	9	8	31
2.1 sputnik	3.0 x 5.0 mtr	4	2	3	2	0	4	15.5
2.2 apollo	9.0 x 7.6 mtr	16	16	14	18	18	16	71
2.3 soyuz	8.0 x 7.6 mtr	16	11	10	16	12	12	63
apollo + soyuz	17 x 7.6 mtr	36	28	24	34	30	30	129
2.4 vostok	4.7 x 6.5 mtr	12	10	10	12	12	11	23.5
3.1 telstar	3.0 x 5.0 mtr	2	0	2	2	0	4	17.5
3.2 gagarin	5.8 x 8.0 mtr	12	10	10	14	12	11	48.5
3.3 aldrin	5.4 x 8.0 mtr	12	8	9	8	9	10	42
3.4 armstrong	5.4 x 8.0 mtr	12	8	9	8	9	10	41.5
3.5 valentina	6.5 x 8.0 mtr	12	12	10	12	12	12	50

rooftop kitchen

maximum numbers for dining 30  
maximum numbers for a stand up reception 50



