



wallacespace **covent garden** dimensions and capacities

	dimensions	minimum numbers	max. theatre style	max. u-shape tables + chairs	max. boardroom	max. u-shape chairs	max. cabaret	max. soft seating	working space in square metres
60ps astoria	8.2 x 5.3 mtr	20	n/a	n/a	n/a	n/a	16	n/a	43.5
60ps scala	7.7 x 8.5 mtr	20	n/a	n/a	n/a	n/a	35	n/a	65.5
60ps blitz	8.2 x 6.9 mtr	20	n/a	n/a	n/a	n/a	n/a	25	56.5
60ps roundhouse	8.2 x 6.4 mtr	20	n/a	n/a	n/a	n/a	35	n/a	52.5
60ps marquee	8.2 x 6.7 mtr	20	n/a	n/a	n/a	n/a	30	n/a	54.5
the kitchen	13.12 x 3 mtr	maximum numbers for dining 40 maximum numbers for a stand up reception 60 maximum numbers for a theatre style 60							

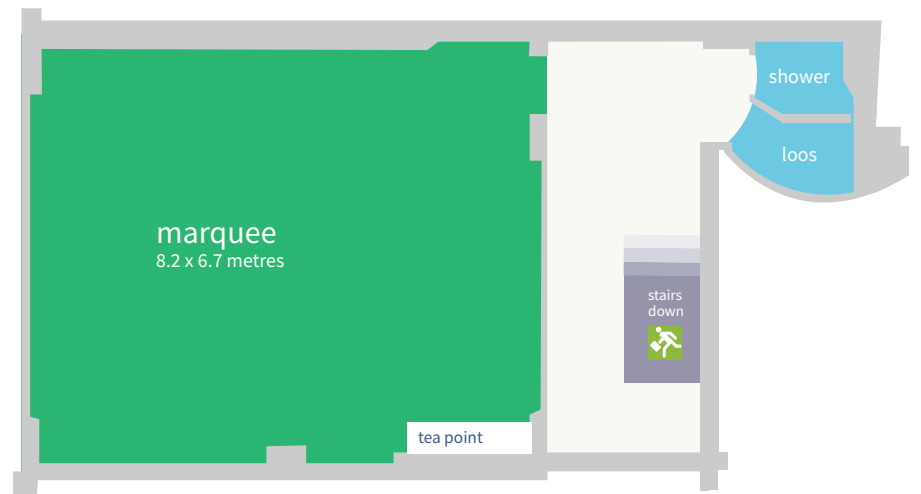
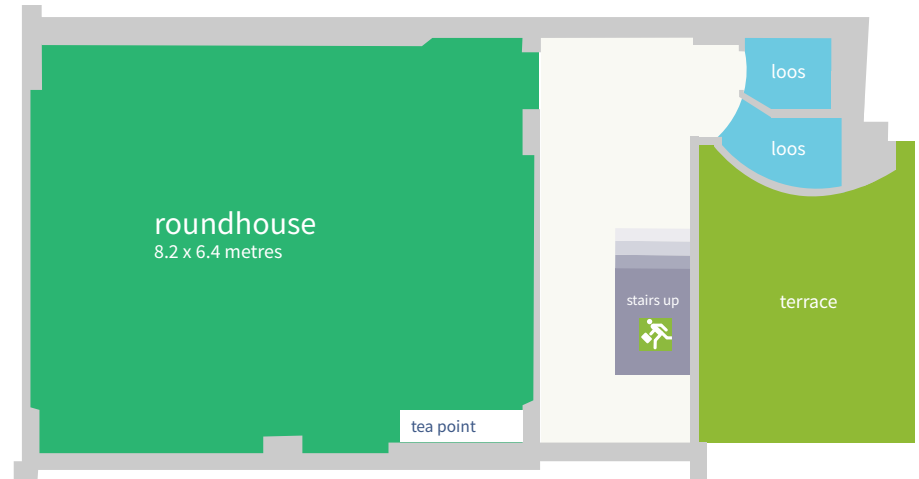
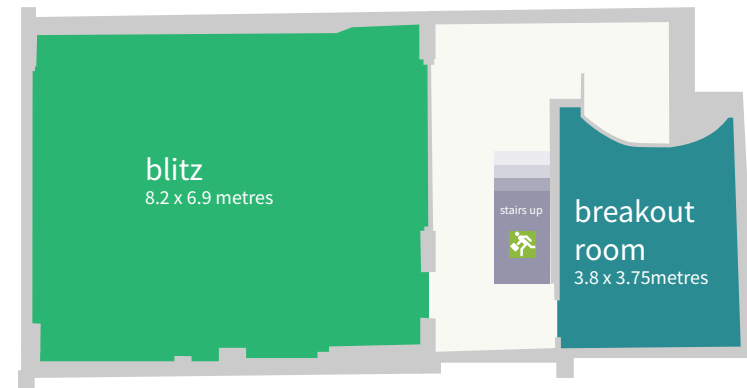
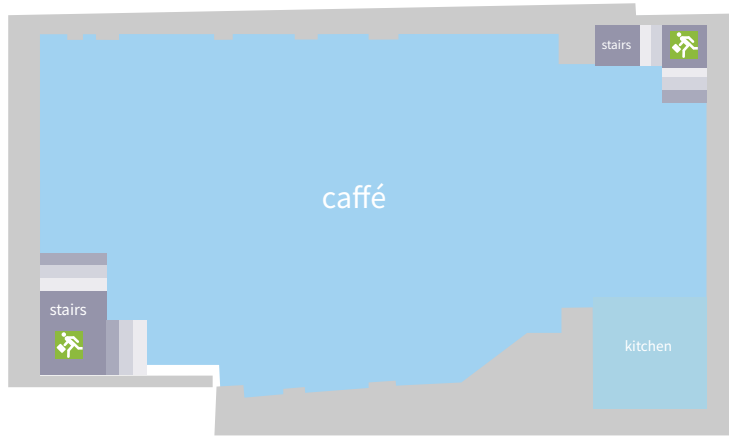


wallacespace covent garden dimensions and capacities

	dimensions	minimum numbers	max. theatre style	max. u-shape tables + chairs	max. boardroom	max. u-shape chairs	max. cabaret	max. soft seating	working space in square metres
53ps 1956	10.2 x 4.3 mtr	18	40	18	20	20	20	18	42.8
53ps 1959	8.2 x 4.3 mtr	12	30	12	16	16	16	14	33.5
53ps1965	7.5 x 4.4 mtr	12	30	12	16	16	16	14	35.5
53ps 1969	7.9 x 5.3 mtr	18	40	18	20	20	20	18	44.4
53ps 1972	4.7 x 5.8 mtr	10	24	12	16	16	16	12	28
53ps 1977	4.3 x 4.7 mtr	6	15	8	8	0	0	8	20.6
53ps 1979	8.5 x 4.5 mtr	12	30	12	16	16	16	14	39
53ps 1989	6.0 x 4.2 mtr	10	24	12	16	16	16	12	24.9
53ps 1989-90	8.6 x 6.0 mtr	20	50	18	22	26	25	22	49.8
53ps 1990	6.0 x 4.2 mtr	10	24	12	16	16	16	12	25.6
53ps 1990-1991	8.6 x 6.0 mtr	20	50	18	22	26	25	22	49.8
53ps 1991	6.0 x 4.2 mtr	10	24	12	16	16	16	12	24.9
53ps1989-91	12.8 x 6.0 mtr	25	80	24	24	24	36	28	75
53ps 1994	7.6 x 3.8 mtr	12	30	12	16	16	16	14	29
53ps 2019	8 x 6.7 mtr	20	60	22	25	25	30	20	54
the kitchen	12.63 x 8.26 mtr	maximum numbers for dining 60 maximum numbers for a stand up reception 90 maximum numbers for a theatre style 90							



wallacespace **covent garden** 60 parker street all floors





wallacespace **covent garden** 53 parker street first floor

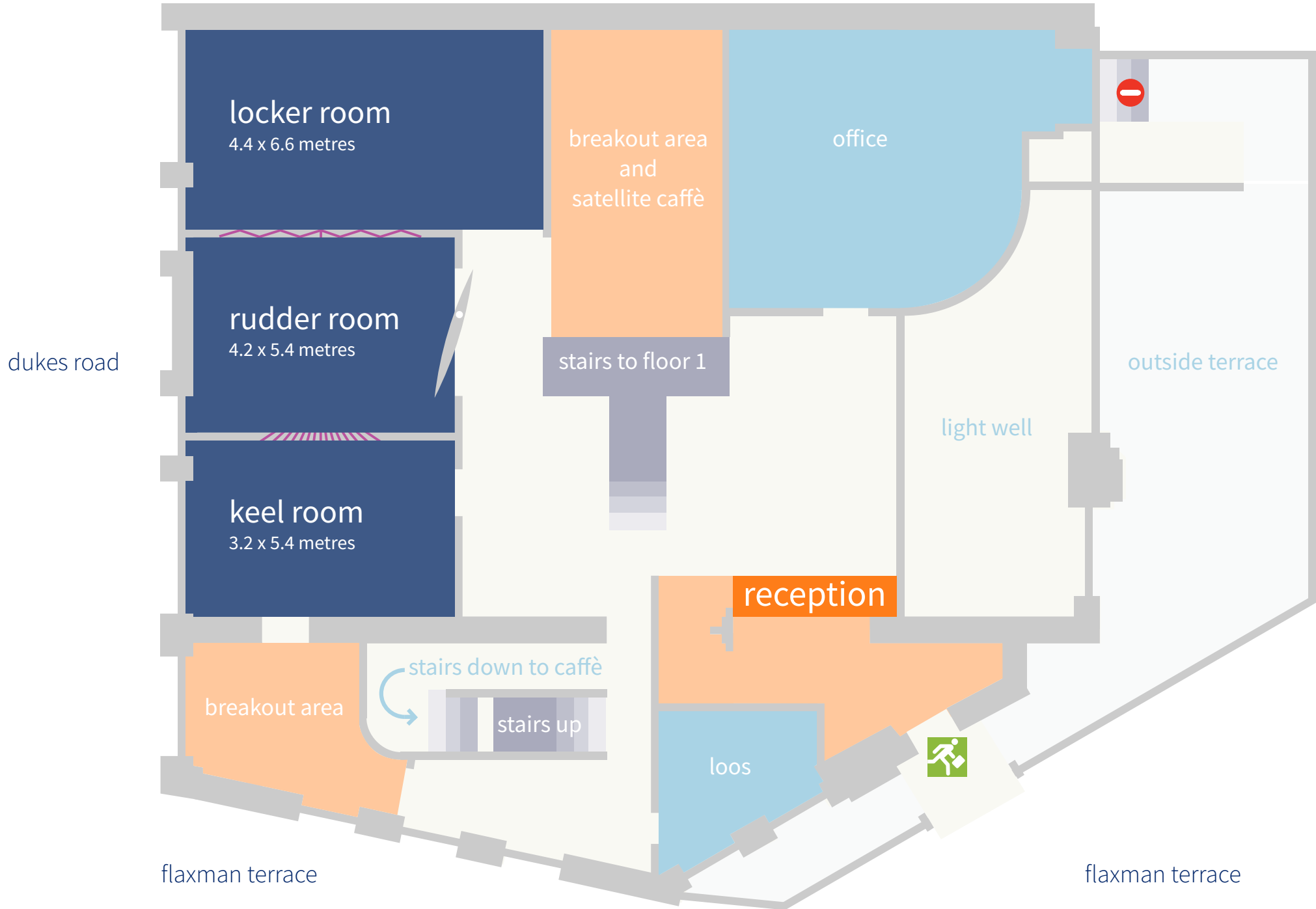




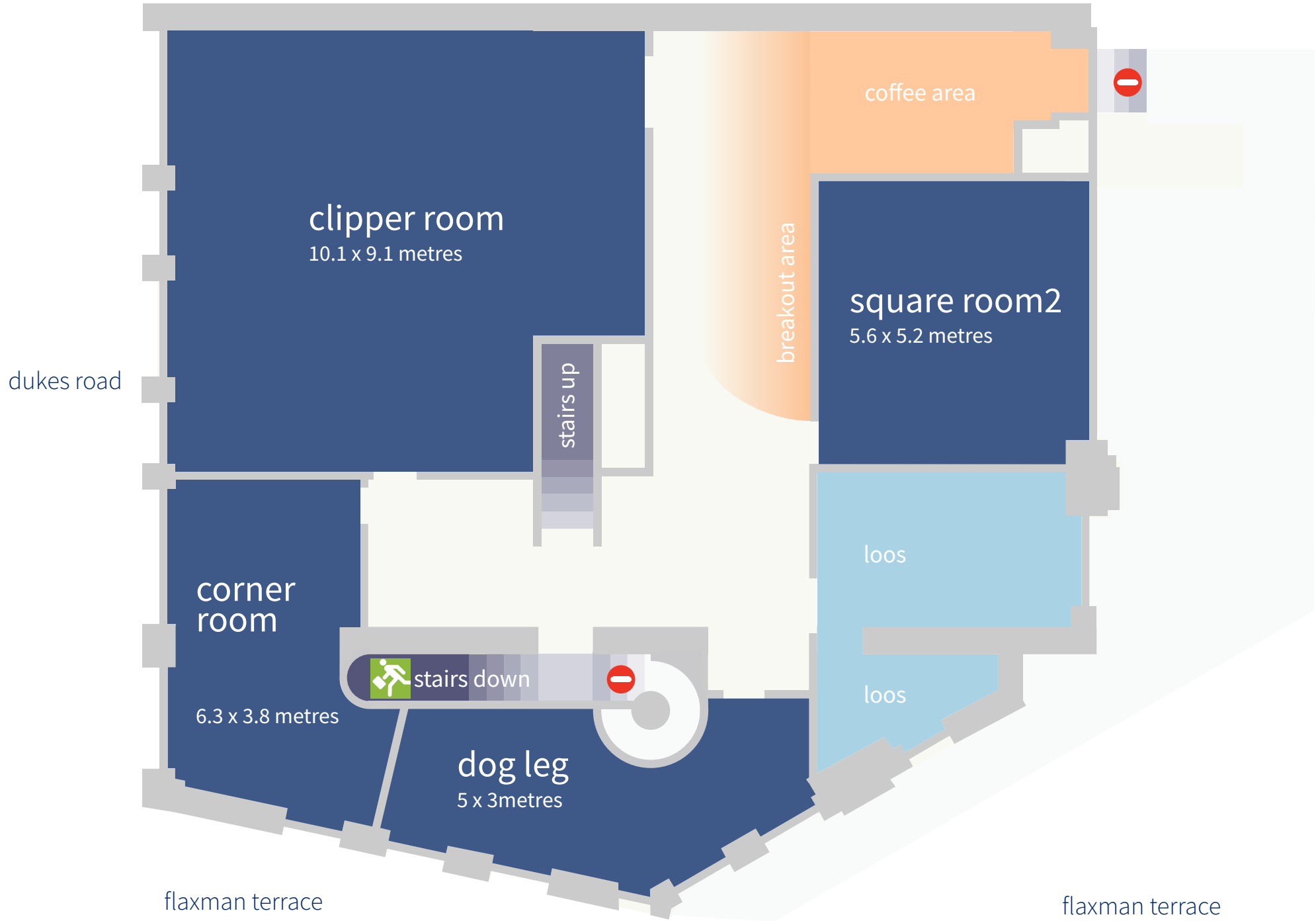


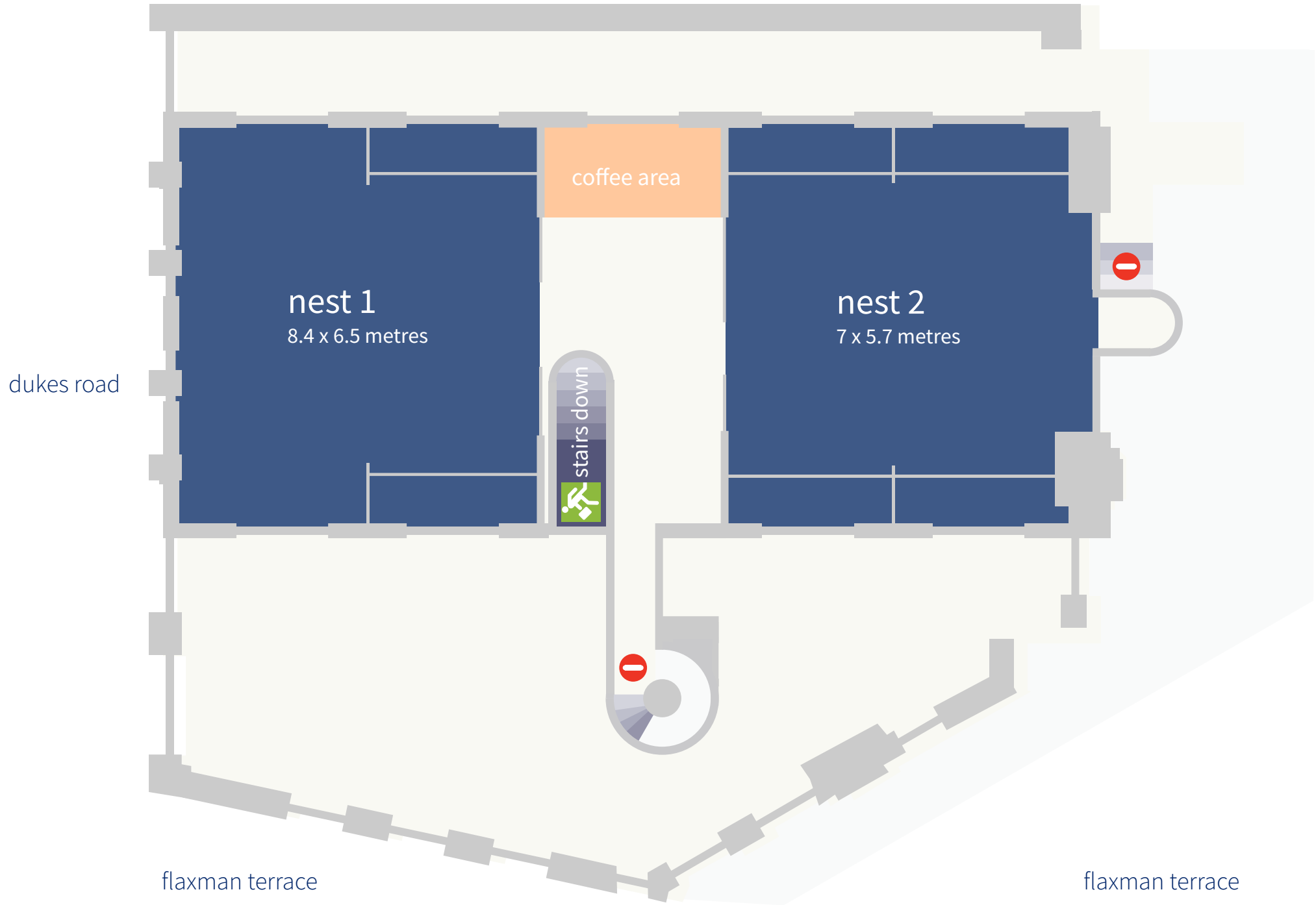


wallacespace **st pancras** ground floor





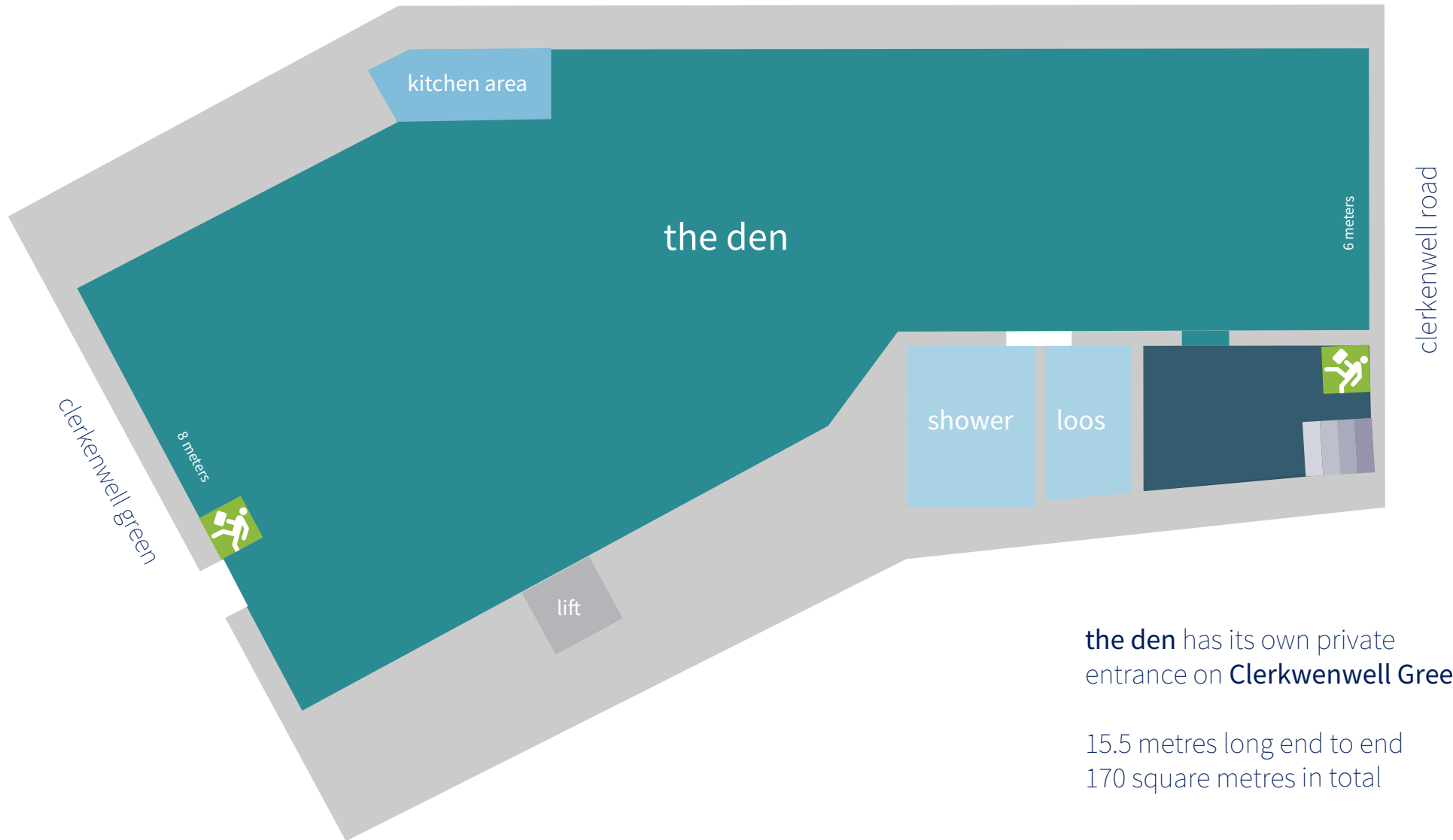






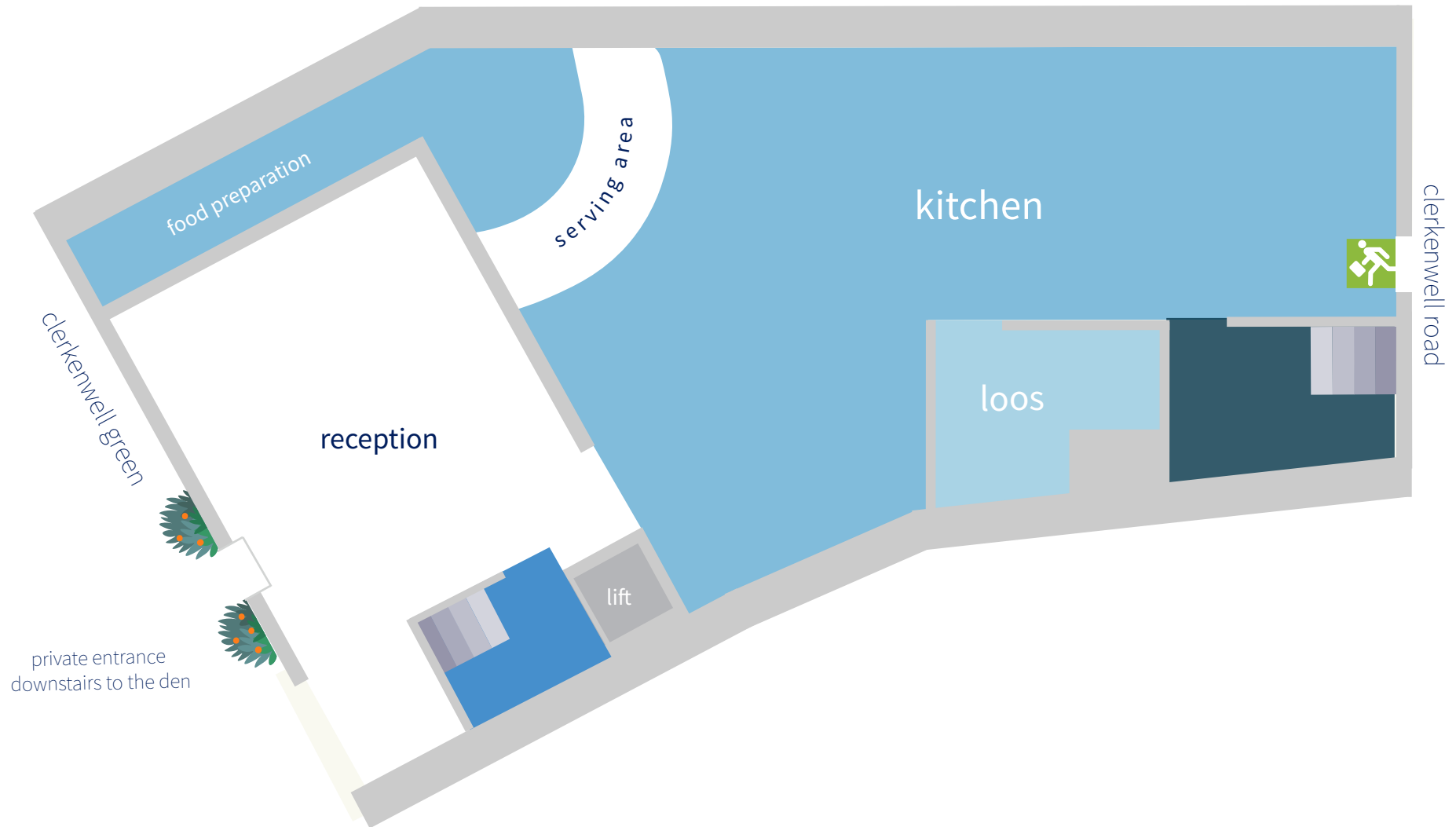
wallacespace clerkenwell green dimensions and capacities

	dimensions	minimum numbers	max. theatre style	max. u-shape tables + chairs	max. boardroom	max. u-shape chairs	max. cabaret	max. soft seating	working space in square metres
11	salt room 5.0 x 7.5 mtr	14	35	14	16	18	24	14	32
12	pepper room 5.0 x 7.5 mtr	12	30	14	16	18	20	14	32
	salt + pepper 10 x 7.5 mtr	28	70	22	28	26	56	24	63.5
13	sugar room 4.4 x 2.5 mtr	6	15	8	10	10	0	8	14
14	ginger room 11 x 5.5 mtr	25	60	20	25	26	35	20	34.5
21	tea room 5.0 x 7.5mtr	14	35	14	16	18	24	14	32
22	coffee room 5.0 x 7.5 mtr	12	30	14	16	18	20	14	32
	tea + coffee 10 x 7.5 mtr	28	70	22	28	26	56	24	63.5
13	copper room 4.4 x 2.5 mtr	6	15	8	12	10	0	10	17
14	tin room 5.4 x 3.3 mtr	14	26	14	18	24	24	18	34.5
31	silk room 5.1 x 7.5mtr	14	40	14	18	18	24	14	32
32	cotton room 5.1 x 7.5 mtr	12	35	14	18	18	20	14	32
	silk + cotton 10.1 x 7.5 mtr	30	80	22	28	26	56	24	63.5
33	flax room 4.5 x 2.5 mtr	4	10	6	8	10	0	8	15
34	jute room 5.5 x 3.3 mtr	6	15	8	10	14	0	8	17
35	hemp room 5.5 x 3.3 mtr	6	15	10	10	14	0	8	17
	penthouse a 10.0 x 7.0 mtr	35	75	25	n/a	30	40	26	65
	penthouse b 12.5 x 4.0 mtr	25	60	22	26	26	45	24	48
	the den 22 x 6 x 2.4 mtr	50	160	40	40	60	90	50	185
the kitchen	total m ² = 143 m ²	maximum numbers for dining 100 maximum numbers for a stand up reception 150 maximum numbers for a theatre style 150							

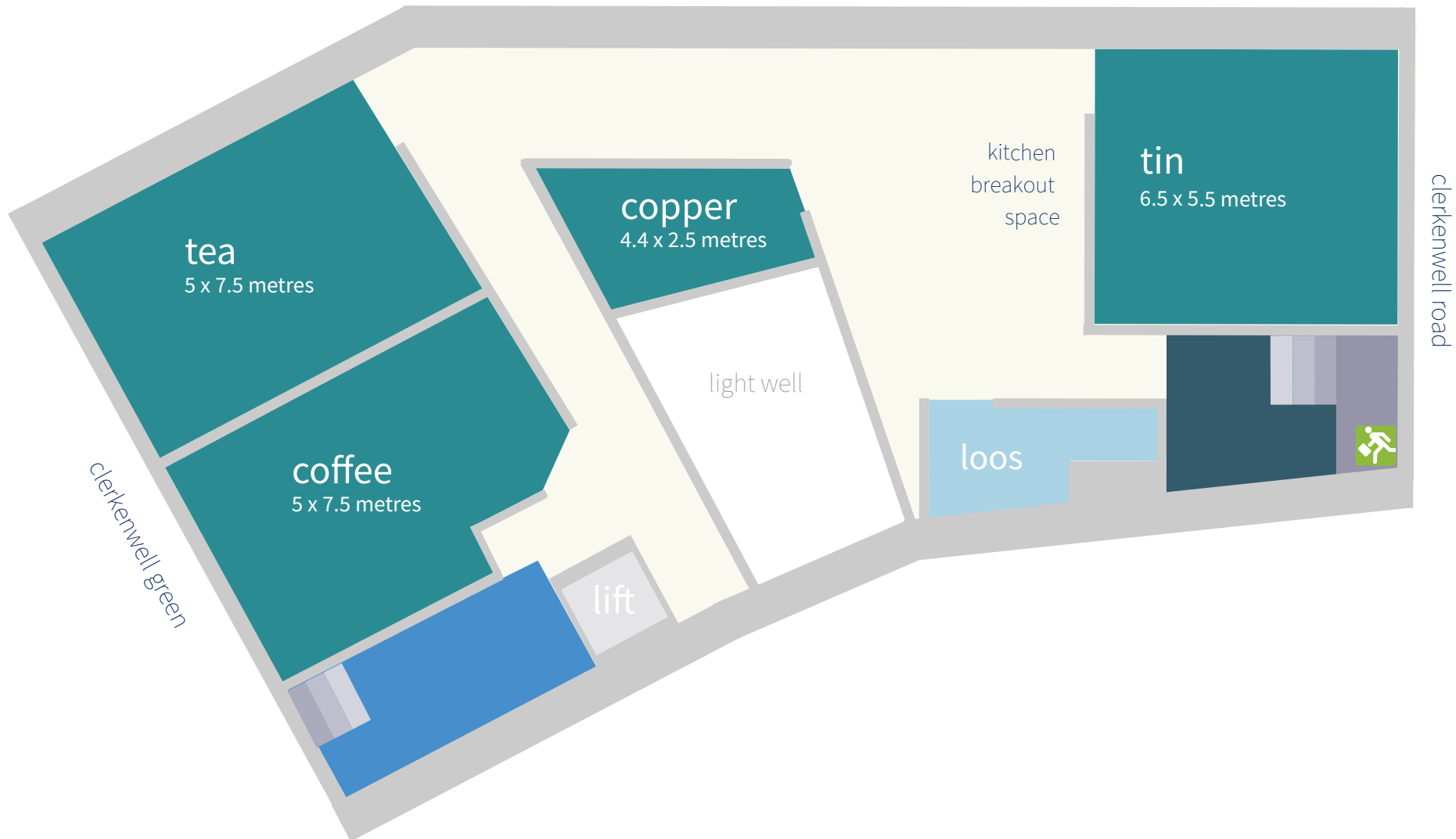


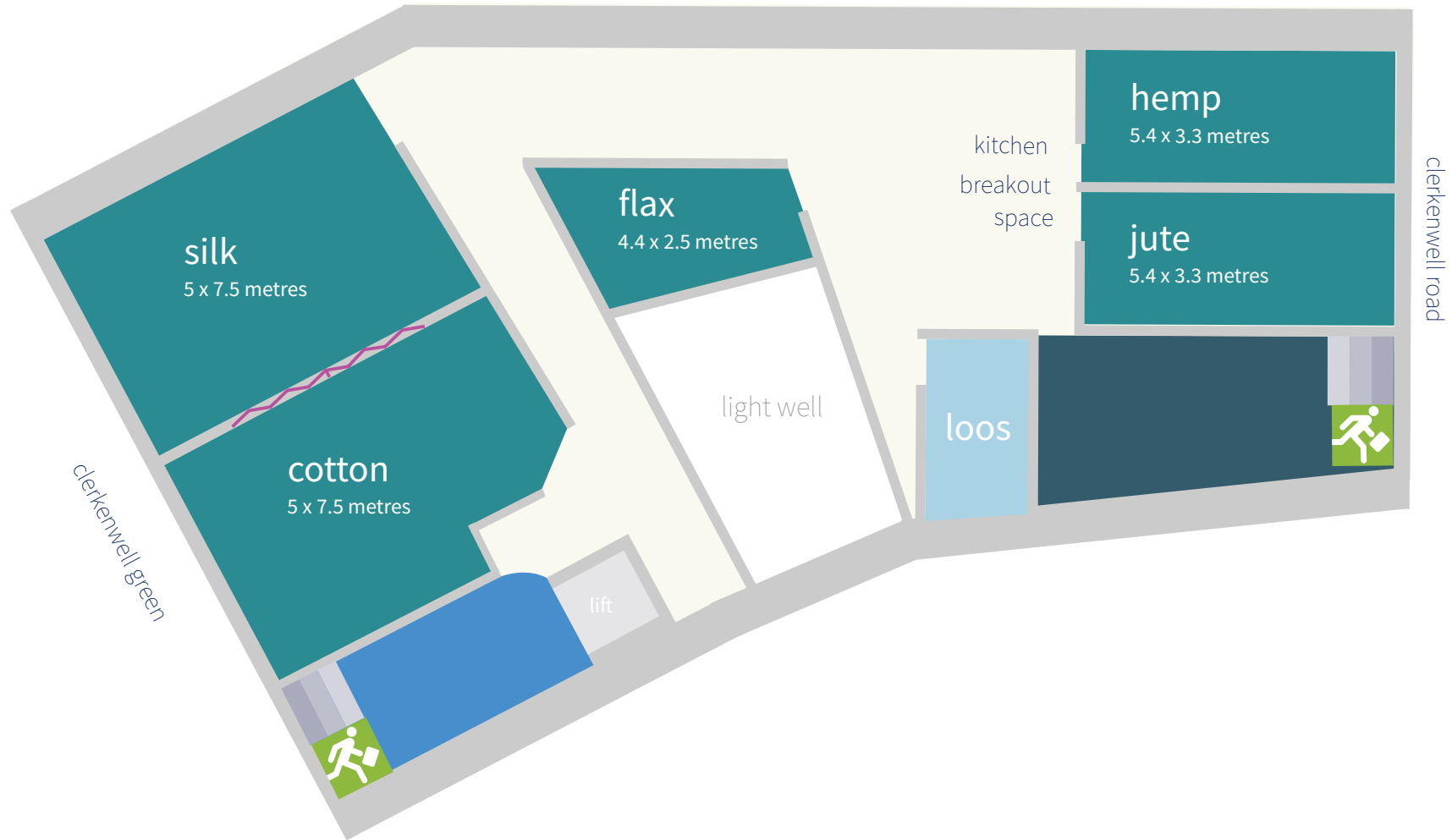
the den has its own private entrance on **Clerkwenwell Green**.

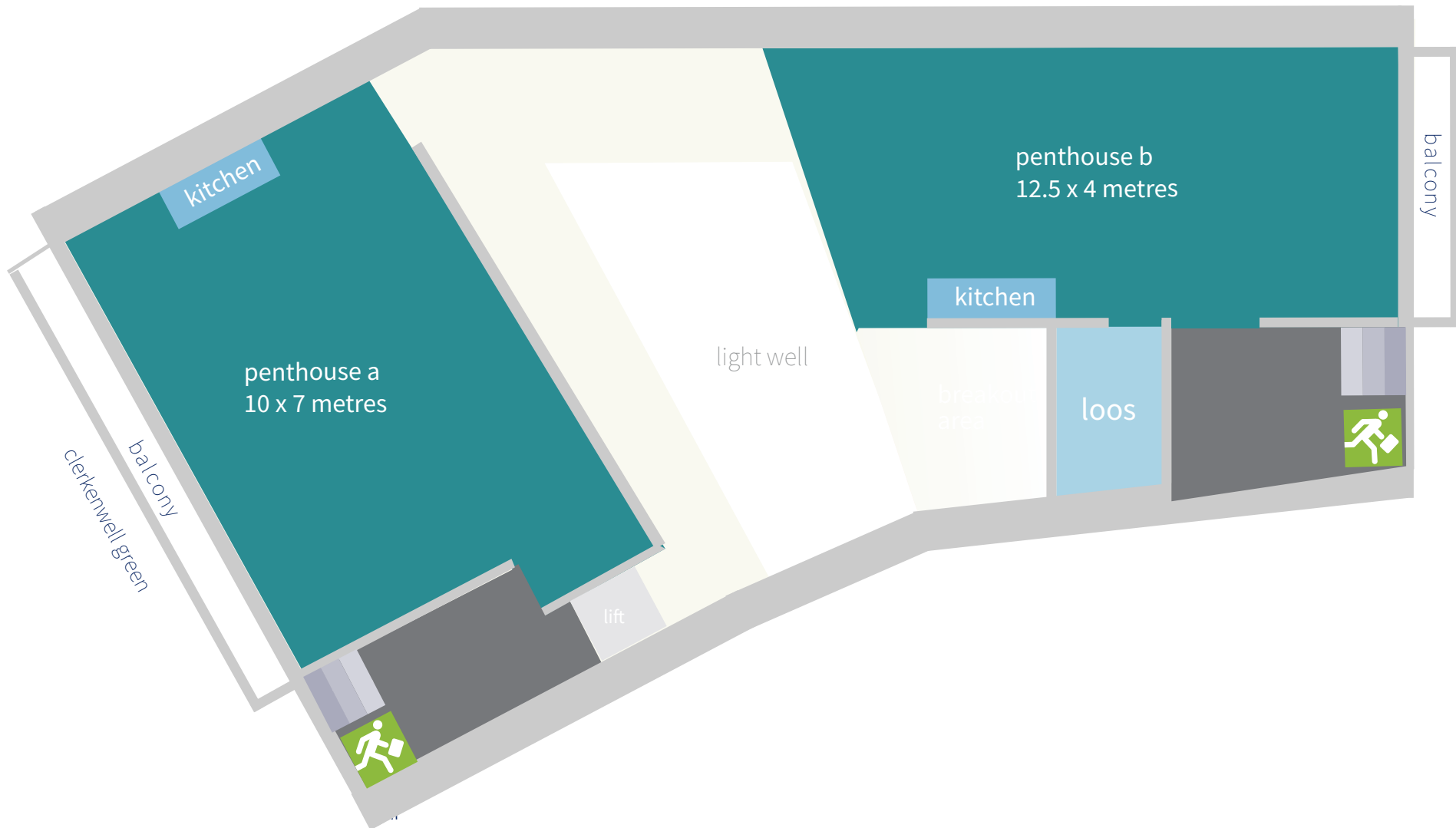
15.5 metres long end to end
170 square metres in total









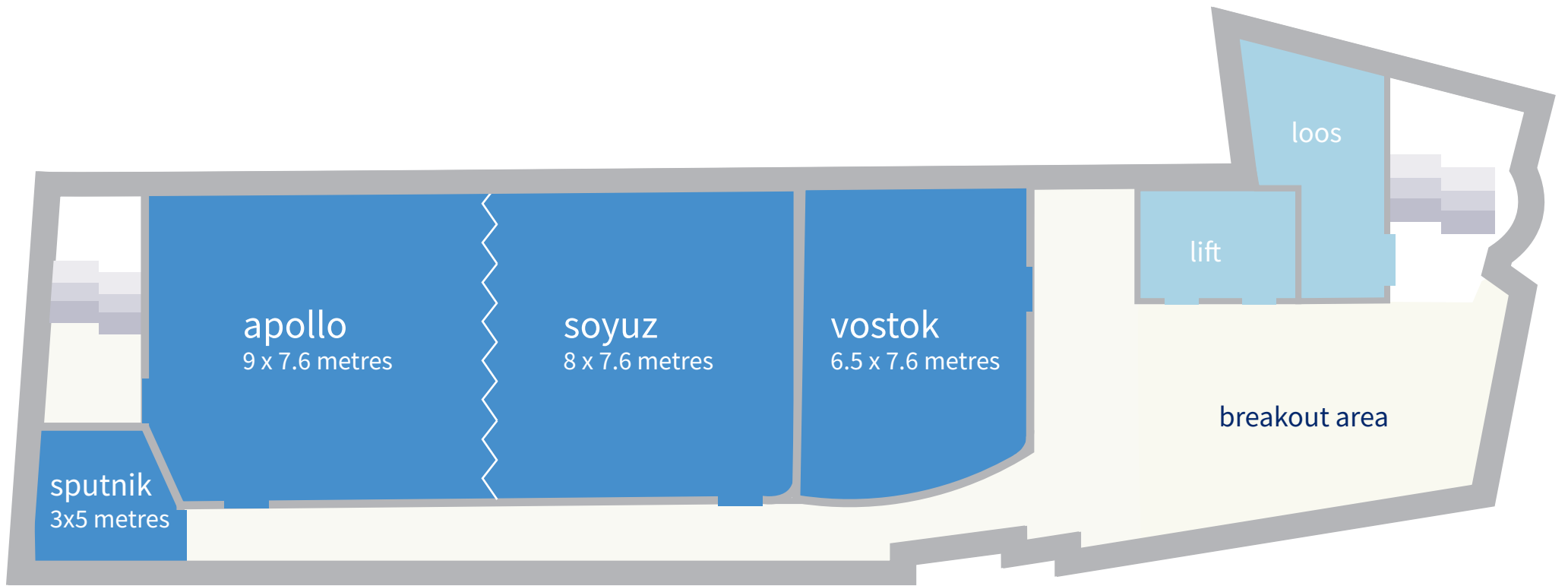




wallacespace *spitalfields* dimensions + capacities

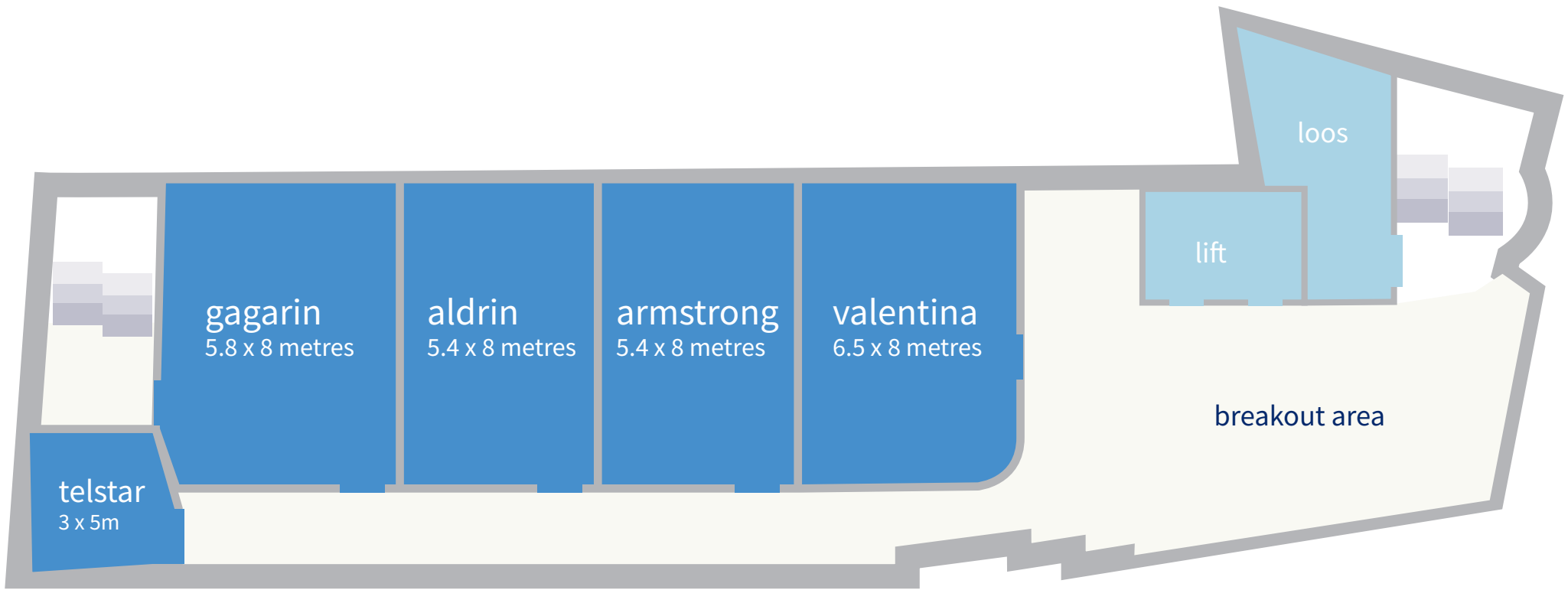
	dimensions	minimum numbers	max. theatre style	max. u-shape tables + chairs	max. boardroom	max. u-shape chairs	max. cabaret	max. soft seating	working space in square metres
1.1 ariane	3.0 x 8.5 mtr	14	40	16	18	20	20	16	41.5
1.2 strelka	4.0 x 5.0 mtr	6	12	0	10	10	0	8	22.5
1.3 belka	4.0 x 5.0 mtr	6	12	0	10	10	0	8	22
1.4 luna	9.0 x 9.0 mtr	40	100	26	22	40	60	35	98.5
1.5 laika	4.0 x 8.0 mtr	12	30	12	14	16	16	14	31
2.1 sputnik	3.0 x 5.0 mtr	4	8	0	8	8	0	6	15.5
2.2 apollo	9.0 x 7.6 mtr	30	80	24	24	28	36	28	71
2.3 soyuz	8.0 x 7.6 mtr	26	60	20	20	20	30	26	63
apollo + soyuz	17 x 7.6 mtr	65	200	40	30	40	90	65	129
2.4 vostok	4.7 x 6.5 mtr	16	40	18	18	24	24	22	23.5
3.1 telstar	3.0 x 5.0 mtr	4	8	16	8	6	0	5	17.5
3.2 gagarin	5.8 x 8.0 mtr	20	40	16	22	22	30	20	48.5
3.3 aldrin	5.4 x 8.0 mtr	14	26	28	14	24	24	18	42
3.4 armstrong	5.4 x 8.0 mtr	14	26	12	14	24	24	18	41.5
3.5 valentina	6.5 x 8.0 mtr	18	40	10	20	20	30	20	50
rooftop kichen	6.8m x 28.5m	maximum numbers for dining 100 maximum numbers for a stand up reception 150 maximum numbers for theatre style 150							





Artillery Lane

Fort Street



Artillery Lane

Fort Street

